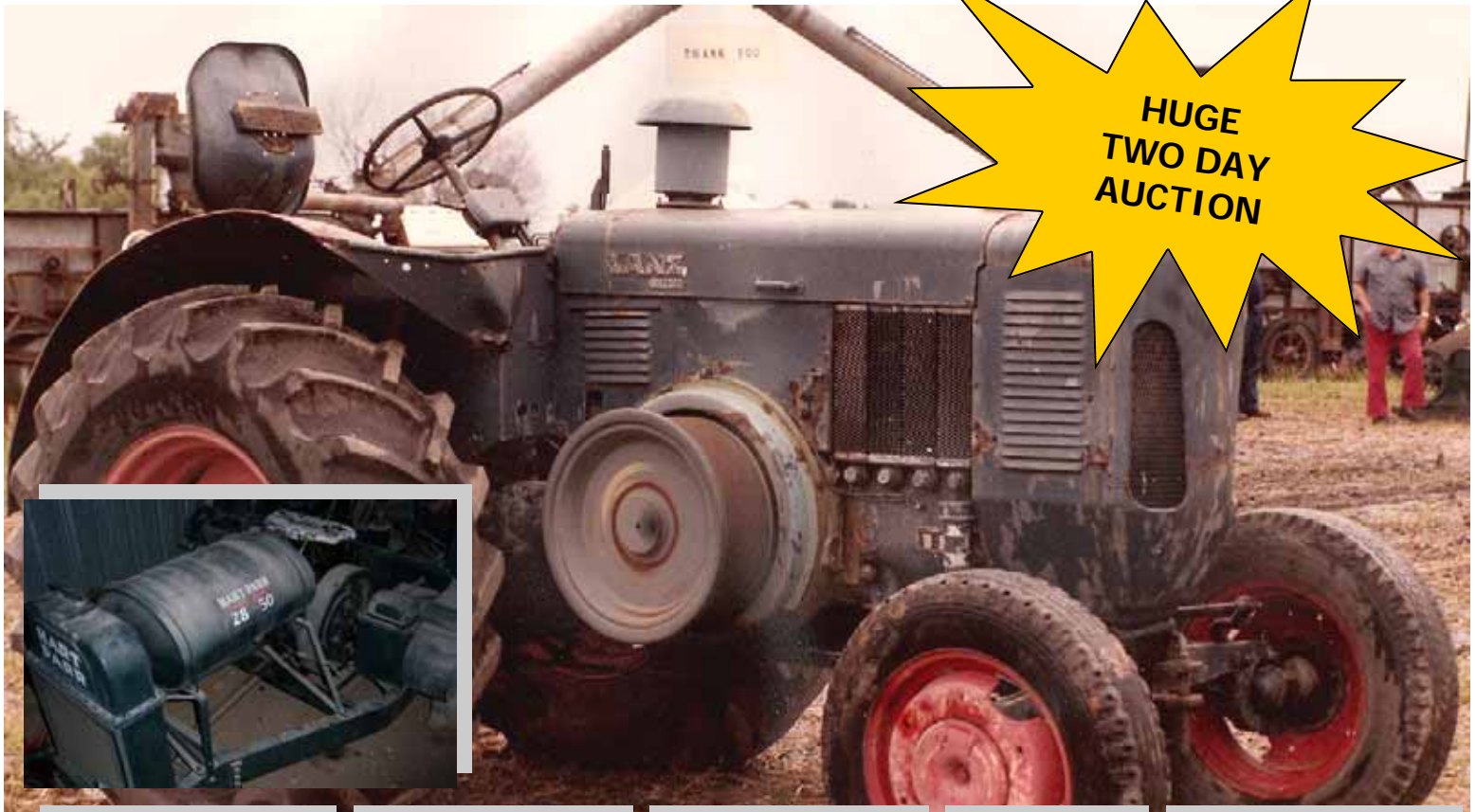




# Another Auction by Fahey

Live and Online

Serving the Upper Midwest Since 1947.



**HUGE  
TWO DAY  
AUCTION**



## Thursday, October 21 & Friday, October 22, 2010 - 8:30 a.m.

700 Plus Antique Tractors. Lanz Bulldog 2 Cylinder diesel, Hart-Parr 28-50, Mpls Cross Motor 17-30, MM RT With Factory Cab, Case Cross Motors, Marshall Field, Twin City, Fordson, Farmall, Cock Shutt, Co-Op, Avery, IH, JD, AC, Massey Harris and More. Some With Low Serial Numbers. Some on Steel. Hundreds of Antique Gas Engines on Carts, Large Asst. Steel Tractor Wheels, Fenders, Large Asst. Antique Walking Plows including Oliver & JD, One Horse Cultivators, Seeders & Parts, Outboard Motors, Guns, Antique Toys, Large Assortment of Tractor Parts. Large Groups of Iron.

**Inspection: Wednesday, October 20, 2010. 9:00 a.m. to 4:00 p.m.**

More details at [www.faheysales.com](http://www.faheysales.com)

**Questions? Contact Chris Fahey**

**Fahey Auctioneers--952.873.2555**

LICENSE NUMBERS: Joe, Jr. 70-39; Terry 70-03; Jim 43008005; Joey 70-41; Chris 70-47; — Registered WI Auctioneer Lic. #: 2401-052

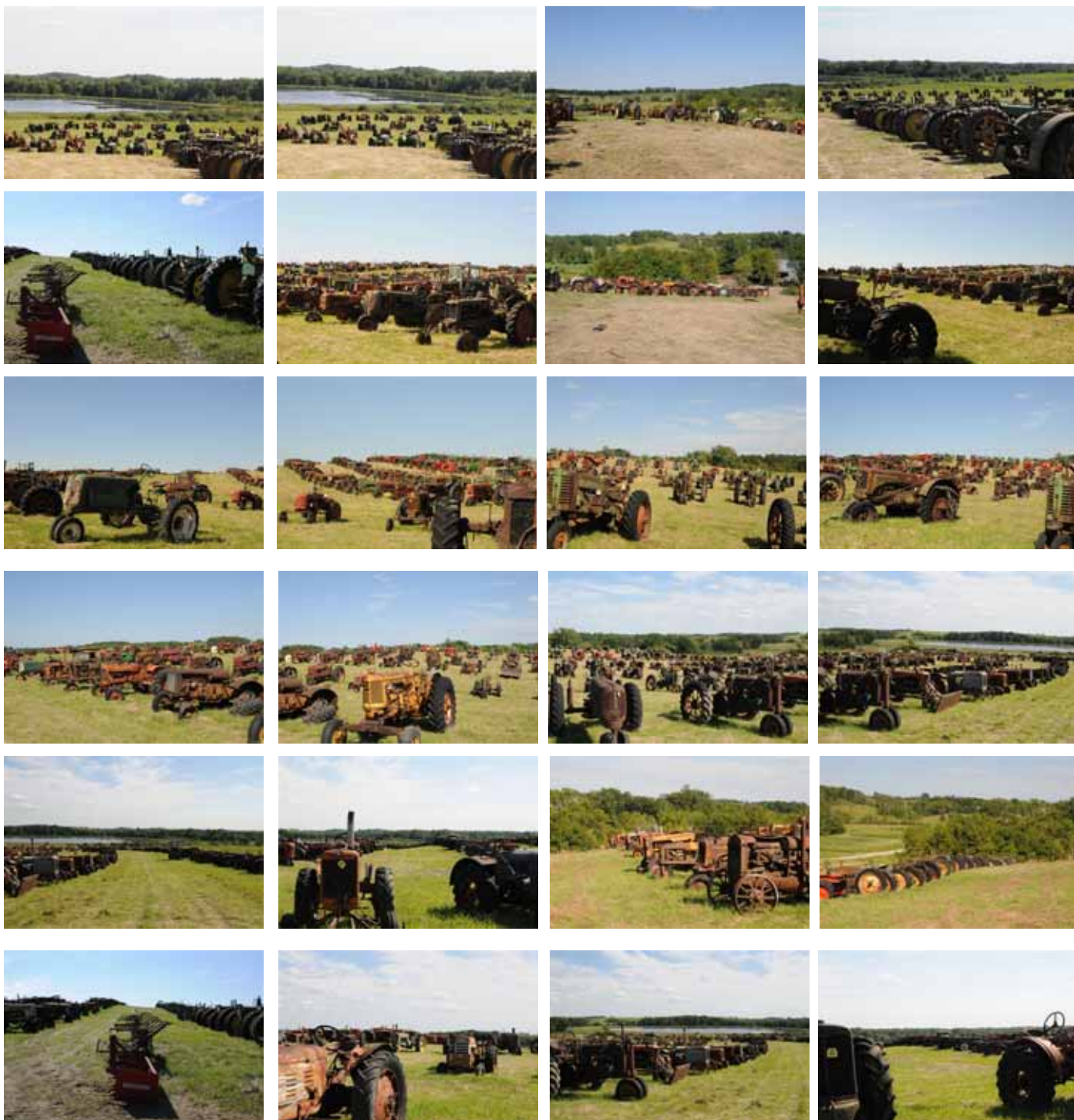


**Turning Your Assets to Cash in a Global Market.**

Paul was an antique tractor enthusiast who collected antique tractors and equipment and has sold parts to his friends and neighbors. ALL TRACTORS ARE TO BE CONSIDERED GROVE TRACTORS UNLESS OTHERWISE STATED. PLAN ON SPENDING BOTH DAYS WITH US AS THERE WILL BE APPROX. 3000 LOTS TO SELL WITH MULTIPUL RINGS. YOU WON'T BE DISAPOINTED.

Everything sells ABSOLUTE!

Hundreds more photos still to come.





Early list of tractors. Many more items to be added.  
Please check back often for updates and hundreds of photos.

- 1 INTERNATIONAL 806 DIESEL TRACTOR, FAST HITCH, 540/1000 PTO, 18.4 X 38 TIRES SN. 11743S-Y  
W/ HINKER CAB, IH WIDE FRONT FULL HYD LOADER.
- 2 FARMALL F-20 TRACTOR 13.9 X 36 TIRES MISSING FRONT RIMS, SN. 114476
- 3 OLIVER 77 OR 88 TRACTOR, HYDRO ELEC, 13.6 X 38 TIRES GAS, SN. UNKNOWN
- 4 OLIVER 880 TRACTOR, WIDE FRONT, FENDERS, NO REAR TIRES SN. 78558-873
- 5 JOHN DEERE B 11.2 X 38 TIRES, OPEN POST, WELDED REAR RIMS.
- 6 ALLIS CHALMERS WD 13.6 X 28 TIRES SN. UNKNOWN RESTORABLE
- 7 MINNEAPOLIS MOLINE RT SN.407600 11.2 X 36 WITH FENDERS
- 8 ALLIS CHALMERS WC 12 X 28 TIRES SN. 100037 RESTORABLE
- 9 MASSEY HARRIS 44? TRACTOR SN. 253531, (MISSING GRILL AND SIDE PANELS)
- 10 MINNEAPOLIS MOLINE UB TRACTOR, 15.5 X 38 TIRES, LIVE PTO,SN. 05803444, FENDERS, RESTOR-  
ABLE
- 11 ALLIS CHALMERS WD 45, WIDE FRONT, 14.9 X 28 TIRES, RESTORABLE, SN. 208663
- 12 FARMALL F-12 11.2 X 36 TIRES , HYSTER OVER DRIVE TRANSMISSION WITH ROUND SPOKE FRONT  
WHEELS, SN. FS73757 RESTORABLE
- 13 MINNEAPOLIS MOLINE UTU RED NOSE, TRACTOR 13.6 X 36 REAR TIRES FENDERS, SN. 312953
- 14 FARMALL REGULAR TRACTOR SN. UNKNOWN RESTORABLE
- 15 CASE S TRACTOR 13.6 X 26 REAR TIRES SN. 4907389S WIDE FRONT STANDARD FENDERS, GOOD TIN,  
RESTORABLE. (DENT IN GRILL)
- 16 FARMALL 560 FACTORY L.P. TRACTOR, 15.5 X 38 TIRES, SCHWARTZ WIDE FRONT SCHWARTZ ALL HYD.  
LOADER, REAR WHEEL WIEGHTS. SN. UNKNOWN
- 17 JOHN DEERE 720 NARROW FRONT W/ ROLL-A-MATIC GAS 15.5 X 38 SN. 7201938 (PARTS MISSING)
- 18 JOHN DEERE D TRACTOR, 16.9 X 30, ELC. START, FACTORY LIGHTS, FENDERS GOOD TIN, RESTOR-  
ABLE, SN. 166775
- 19 FARMALL MD TRACTOR DIESEL, 13.6 X 38 TIRES, SN. DVK272408, NARROW FRONT, NO FRONT WHEELS  
LIVE HYD. PUMP
- 20 MINNEAPOLIS MOLINE UTI TRACTOR, GAS, RESTORABLE SN. UNKNOWN
- 21 FORD GOLDEN JUBLIE TRACTOR, WITH FRONT GRILL GAURD SN. UNKNOWN RESTORABLE, INSIDE 4 SEC-  
TION WEIGHTS
- 22 OLIVER 60 TRACTOR, NARROW FRONT, GAS, SN. 618522 9 X 32 TIRES, LIVE HYD. RESTORABLE
- 23 JOHN DEERE 620 TRACTOR NARROW FRONT ROLL-A-MATIC, SN. 6211608 13.6 X 38 TIRES, RESTORABLE
- 24 CASE DC TRACTOR 12 X 38 TIRES, NARROW FRONT, CAST IRON FRONT WHEELS, SN. 521030DC, RE-  
STORABLE
- 25 CASE RC TRACTOR, WITH SUN BURST GRILL BARROW FRONT, SN. 4229942 RESTORABLE (NO REAR RUB-  
BER) WELD ON TOP OF REAR HOUSING
- 26 ALLIS CHALMERS WC TRACTOR NARROW FRONT, SN WC81269 RESTORABLE 12 X 28 TIRES
- 27 MASSEY HARRIS 44 TRACTOR WIDE FRONT, HYD, SN 44DR5810, 12.4 X 38 TIRES.
- 28 JOHN DEERE 70 TRACTOR, GAS 15.5 X 38 TIRES NARROW FRONT, ROLL-A-MATIC, SN. 7014487 RE-  
STORABLE
- 29 FARMALL M TRACTOR, NO TIN OR REAR WHEELS SN. FBK150670
- 30 INTERNATIONAL 706 GAS, TRACTOR, 18.4 X 34 TIRES SCHWARTZ WIDE FRONT, FAST HITCH, ( HAS  
HAD FIRE IN CAB)
- 31 FARMALL 460 TRACTOR, GAS SCHWARTZ WIDE FRONT, DU-ALL FULL HYD LOADER, SN. UNKNOWN 15.5 X  
38 TIRES
- 32 OLIVER 1800 OR 1900 TRACTOR SN. 144297 WIDE FRONT 18.4 X 34, 3PT,(NO TIN) PARTS MISSING  
OFF ENGINE.
- 33 CASE MODEL 741C GAS TRACTOR, SN. 8241153, 15.5 X 38 TIRES, CASE WIDE FRONT ( NO EAGLE  
HITCH) RESTORABLE
- 34 CASE 730 TRACTOR DIESEL, 18.4 X 34 TIRES SCHWARTZ WIDE FRONT, DUAL RANGE DRIVE TRANSMIS-  
SION, SN. UNKNOWN
- 35 CASE DC TRACTOR, 12 X 38 TIRES, EAGLE HITCH, ADJUSTABLE WIDE FRONT NO RADIATOR, SN.  
5621113
- 36 ALLIS CHALMERS CA TRACTOR, SNAP COUPLER HITCH, AC WIDE FRONT, SN. 9125 RESTORABLE
- 37 FARMALL F-12 OR 14 TRACTOR WITH FACTOR REAR STEEL WHEELS
- 38 FERGUSON 20? TRACTOR SN.TE40418
- 39 CASE SC TRACTOR SN. 5224315 NARROW FRONT, 10X 38 TIRES
- 40 FARMALL REGULAR TRACTOR, SN. T26675, ALL STEEL, W/ REAR FENDERS, OVER DRIVE TRANSMISSION
- 41 FARMALL F-12 TRACTOR, SN. FS77453, ALL STEEL, W/ SOLID STEEL FRONT RIMS, FENDERS
- 42 DIESEL FIELD- MARSHALL TRACTOR 1 CYL. DIESEL ENGINE, 18.4 X 30, GOOD TIN, FENDERS
- 43 CASE 600 TRACTOR GAS, WITH 2RW MOUNTED CASE PICKER, MISSING HOOD, SN. 6100549 CORN PICKER  
MODEL 425 SN.44976

44 FERGUSON 20 TRACTOR 11.2 X 28 TIRES SN. TO22590 GOOD TIN, FENDERS  
45 ALLIS CHALMERS B TRACTOR, 9 X 24 TIRES SN.15751 RESTORABLE  
46 CASE 400 STANDARD TRACTOR, GAS, 16.9 X 30 SN. UNKNOWN  
47 CASE CROSS MOTOR TRACTOR (NEED MORE INFO)  
48 ALLIS CHALMERS WD (FOR PARTS)  
49 ALLIS CHALMERS WC TRACTOR REAR WELDED FLATE SPOKES SN. 66672 (FOR PARTS)  
50 STATIONARY WATER PUMP  
51 CASE VAC TRACTOR SN.5158088 W/11 X 28 TIRES  
52 FARMALL REGULAR TRACTOR W/ROUND FRONT AND REAR SPOKES  
53 FARMALL F- 20 TRACTOR W/ROUND SPOKE FRONTS ELEC START, AND HYDRAULICS, SN. UNKNOWN  
54 ALLIS CHALMERS WC 12 X 24 TIRES REAR ROUND SPOKES RIMS SN. 72512  
55 ALLIS CHALMERS 175 DIESEL TRACTOR, YEAR ROUND CAB, 16.9 X 28 TIRES, 3PT, 540 PTO, 2 RE-  
MOTES, SN. 1755187  
56 ALLIS CHALMERS WC TRACTOR, ROUND REAR SPOKES, SN 19885  
57 DEUTZ 6206 DIESEL TRACTOR FWA, 16.9 X 30 REAR W/ WESTENDORF FULL HYD LOADER 3PT, SN.  
75627805  
58 ALLIS CHALMERS WD TRACTOR 13.6 X 28 REAR TIRES, SN. UNKNOWN  
59 MASSEY HARRIS 101 JR. TRACTOR GAS, 11.2 X 38 TIRES SN. 50954  
60 CASE VA TRACTOR SN. VA1493268, WIDE FRONT, 10 X 24 TIRES  
61 FARMALL F-20 TRACTOR, 13.9 X 36 TIRES, WITH STAN HOIST TRIP BUCKET LOADER SN. UNKNOWN  
62 JOHN DEERE A SN. 507885/-8 NARROW FRONT 12 X 38 TIRES  
63 MULE AIR PLAIN TUG, W/ 6 CYL ENGINE. SN. UNKNOWN  
64 JOHN DEERE 720 DIESEL TRACTOR 15.5 X 38 TIRES, NARROW FRONT, ROLL-A-MATIC, PONY ENGINE,  
SN. 7215753  
65 JOHN DEERE H TRACTOR SN. 811 16.9 X 26 TIRES  
66 CASE VAC TRACTOR SN. 5354203 11 X 28 TIRES  
67 MASSEY HARRIS 44 TRACTOR, 13.6 X 38 TIRES, LIVE HYD. SN. UNKNOWN  
68 FARMALL F-14 TRACTOR FS 139135  
69 FARMALL REGULAR TRACTOR ROUND SPOKE FRONTS OLIVER TIP TOESTEEL, SN. UNKNOWN  
70 OLIVER 70 TRACTOR 11.2 X 38 TIRES, LIVE HYD. NARROW FRONT, SN. 157337  
71 CASE 930 DIESEL TRACTOR STANDARD 18.4 X 34 TIRES SN 8212729 WIDE FRONT, COMFORT KING  
72 FIELD-MARSHALL DIESEL TRACTOR, WIDE FRONT SN. 12105  
73 ALLIS CHALMER 190 DIESEL TRACTOR, WITH CAB, 18.4 X 34 TIREES, 3PT, 540 PTO SN 19015965DXT  
74 FARMALL F-14 TRACTOR W, 2RW CULTIVATOR, HAND LIFT, SN. F6143856  
75 FORD 6000 DIESEL TRACTOR BLUE AND WHITE, FRONT WEIGHTS 15.5 X 38 TIRES, 3PT, 540 PTO,  
76 ALLIS CHALMERS WC TRACTOR SN. 85200  
77 OLIVER 88 TRACTOR 12.6 X 38 TIRES HYDRO ELEC. (MISSING FRONT END), FENDERS, SN.140223088F  
78 INTERNATIONAL WD-9 TRACTOR , 15.5 X 38 TIRES, SN. UNKNOWN  
79 ALLIS CHALMERS WC TRACTOR W/ SAW RIG, SN. 11256 12 X 28 TIRES  
80 FORD 6000 DIESEL TRACTOR, 3PT, 540 PTO, 15.5 X 38 TIRES  
81 OLIVER SUPER 88 TRACTOR 15.5 X 38 TIRES WIDE FRONT, ADD ON 3PT SN. UNKNOWN  
82 MINNEAPOLIS MOLINE ZTU TRACTOR, ROUND SPOKE WHEELS SN. 560125 NARROW FRONT,  
83 ALLIS CHALMERS G TRACTOR 6 X 30 TIRES SN.G790  
84 CLETRAC CRAWLER TRACTRER SN. 12992 6 CYL. GAS  
85 FORD 8N TRACTOR 11 X 38 TIRES NO 3PT SN. UNKNOWN  
86 JOHN DEERE 60 TRACTOR, SN. 6027112, NARROW FRONT, ROLL-A-MATIC, 13.6 X 38 TIRES, GOOD TIN,  
87 CASE S STANDARD TRACTOR, WIDE FRONT, 12 X 26 TIRES SN. 5406947  
88 CASE 400 TRACTOR GAS, NARROW FRONT 14.9 X 38 TIRES (NO EAGLE HITCH) SN. 8064828  
89 ALLIS CHALMERS D-17 TRACTOR FOR PARTS  
90 JOHN DEERE A TRACTOR 12 X 38 TIRES, SN. 489373 NARROW FRONT  
91 COCKSHUTT 30 TRACTOR NARROW FRONT 10 X 38 TIRES, HYD PUMP, FENDERS  
92 INTERNATIONAL 130 TRACTOR W/ PITLESS/BALANCED HEAD SIDE MOWER SN.4975J 12.4 X 24 TIRES  
93 ALLIS CHALMERS WD 45 WIDE FRONT (NO MOTOR)  
94 ALLIS CHALMERS C W/ 2RW CULTIVATOR 11.2 X 24 SN. C-30?  
95 ALLIS CHALMERS WC TRACTOR 13 X 24 TIRES SN. 9753  
96 ALLIS CHALMERS TRACTOR 13.9 X 28 TIRES WIDE FRONT, (FOR PARTS)  
97 CASE DC HIGH PLAT FORM TRACTOR, NARROW FRONT, SN. 4401895  
98 FORDSON TRACTOR ALL STEEL HAND CRANK SN. UNKNOWN  
99 JOHN DEERE B UNSYLED TRACTOR WELDED FLATES SN. 14714 NO REAR TIRES  
100 FARMALL B TRACTOR, SN. UNKNOWN, RESTORABLE  
101 FARMALL F-20 NARROW TRACTOR CAST WHEELS, SN. 147591  
102 ALLIS CHALMERS B TRACTOR W/ BELLY MOWER, SN. B3311  
103 FARMALL F-14 TRACTOR W/ HYD LIFT, HIGH RUBBER  
104 FORD 2N TRACTOR SN. 22854  
105 HUBER TRACTOR ALL STEEL W/ FENDER EXTENSIONS, MISSING HOOD

106 FARMALL F-20 TRACTOR 11 X 28 TIRES SN. UNKNOWN RESTORABLE  
107 ALLIS CHALMERS B TRACTOR 10 X 24 TIRES SN.17244  
108 MINNEAPOLIS MOLINE ZTU TRACTOR SN.17086 W/ TRIP BUCKET LOADER, NARROW FRONT 13 X 36  
TIRES, CHARLINE HYD PUMP, ( MM EMBLUME ON RADIATOR)  
109 COCKSHUTT STANDARD 13 X 24 TIRES, WIDE FRONT, FENDERS SN. UNKNOWN  
110 FARMALL 140 TRACTOR SN. 17647, FAST HITCH, 10 X 24 TIRES  
111 OLIVER 60 TRACTOR, FENDERS, NARROW FRONT,  
112 FORD 2N TRACTOR, SN. 142077 RESTORABLE 10 X 28 TIRES  
113 MINNEAPOLIS MOLINE UB SPECIAL TRACTOR NARROW FRONT, SN. 09700132 FENDERS, RESTORABLE,  
12.6 X 38 TIRES  
114 FARMALL H TRACTOR SN. 152011 11.2 X 38 TIRES RESTORABLE  
115 JOHN DEERE 70 TRACTOR GAS, JD WIDE FRONT, 18.4 X 38 SN. 7001895  
116 ALLIS CHALMERS B TRACTOR 8.3 X 24 TIRES SN. 4794 RESTORABLE  
117 ALLIS CHALMERS WC TRACTOR SN. WC97075 RESTORABLE  
118 OLIVER 77 OR 88 TRACTOR, NARROW FRONT SN. UNKNOWN  
119 ALLIS CHALMERS 190 XT CONSOLE CONTROL TRACTOR DIESEL, SN. 4553XT 18.4 X 38 TIRES, CHAINS,  
AND CAB  
120 JOHN DEERE 70 TRACTOR, POWER STEERING NARROW FRONT, ROLL A MATIC, GAS, 15.5 X 38 TIRES,  
SN. 7041585  
121 JOHN DEERE 70 TRACTOR DIESEL SN, 7038254, POWER STEERING, 13 X 38 TIRES, JD SQUARE WIDE  
FRONT  
122 ALLIS CHALMERS WC TRACTOR 13 X 24 TIRES, SN 23364 FLAT  
123 MINNEAPOLIS MOLINE UB TRACTOR, NARROW FRONT, 13 X 38 TIRES, SN. UNKNOWN  
124 ALLIS CHALMERS WF STANDARD TRACTOR SN. WF42501 RESTORABLE 10 X 28 TIRES  
125 ALLIS CHALMERS WC TRACTOR SN. 97062 NARROW FRONT 12 X 24 TIRES  
126 ALLIS CHALMERS WD-45 TRACTOR 13.6 X 28 TIRES GOOD TIN, SN. UNKNOWN  
127 MINNEAPOLIS MOLINE G TRACTOR SN. G01603440, WIDE FRONT RESTORABLE  
128 JOHN DEERE UNSTYLED B TRACTOR ROUND SPOKE FRONTS WELDED FLATS, SN. 22442 WITH FRONT BLADE  
10 X 36 TIRES NEEDS ENGINE WORK, RESTORABLE  
129 CASE SE TRACTOR SN. 5525673, 11 X 38 TIRES, NARROW FRONT. HAS EAGLE HITCH  
130 JOHN DEERE 50 TRACTOR, 12.4 X 38 TIRES NARROW FRONT ROLL-A-MATIC SN. 5015385  
131 ALLIS CHALMERS WC TRACTOR ROUND SPOKED REAR WHEELS SN. 8315  
132 ALLIS CHALMERS WC TRACTOR SN. 41832, 13 X 24 TIRES GOOD TIN  
133 ALLIS CHALMERS WD TRACTOR, 13.6 X 28 TIRES SN. UNKNOWN  
134 MCCORMICK DEERING 15-30 TRACTOR SN. UNKNOWN  
135 JOHN DEERE A FRAME (SLANT DASH) SN. 528157  
136 MASSEY HARRIS 44 TRACTOR SCHWARTZ WIDE FRONT, 12 X 38 TIRES  
137 CASE DC TRACTOR SN. UNKNOWN 12 X 38 TIRES  
138 FARMALL M TRACTOR, NARROW FRONT, SN. FBK12889 12.4 X 38 TIRES 9 SPD TRANS.  
139 FARMALL REGULAR TRACTOR REAR STEEL, SN. T74580  
140 JOHN DEERE 40 TRACTOR, 10 X 34 TIRES FACTORY WIDE FRONT, 3PT, SN. 68063 GOOD TIN,  
141 MINNEAPOLIS MOLINE ZTU TRACTOR SN. ZTU577800U NARROW FRONT, 38" RIMS  
142 ALLIS CHALMERS WD TRACTOR, NARROW FRONT, SN. UNKNOWN  
143 FARMALL F-20 TRACTOR FACTORY ROUND SPOKES FRONT AND REARS, SN. UNKNOWN  
144 JOHN DEERE 70 TRACTOR, GAS NARROW FRONT, ROLL-A-MATIC, SN.7003596 15.5 X 38 TIRES, POWER  
STEERING,  
145 MINNEAPOLIS MOLINE RTU TRACTOR, SN. UNKNOWN 10 X 36 TIRES  
146 FARMALL F-20 TRACTOR, ROUND REAR SPOKES, 13 X 28 TIRES SN. 20517  
147 OLIVER 70 TRACTOR 13.6 X 38 TIRES SN. UNKNOWN WIDE FRONT  
148 INTERNATIONAL WD-6 STANDARD 6.9 X 30 TIRES SN. UNKNOWN,  
149 OLIVER 70 TRACTOR WIDE FRONT, (FOR PARTS)  
150 JOHN DEERE A TRACTOR, NARROW FRONT ROLL-A-MATIC SN. 681403, 12.6 X 38 TIRES  
151 JOHN DEERE B TRACTOR SN. UNKNOWN, NARROE FRONT,  
152 ALLIS CHALMERS WC TRACTOR SN. 12909, NARROW FRONT, 13.6 X 28 TIRES  
153 MCCORMICK DEERING 10-20 TRACTOR 13 X 28 TIRES (FOR PARTS)  
154 ALLIS CHALMERS WC TRACTOR, REAR STEEL W/ SAW RIG SN. UNKNOWN  
155 MINNEAPOLIS UB MOLINE TRACTOR SN. 09802899 MM WIDE FRONT,  
156 MINNAPOLIS MOLINE UB SPECIAL TRACTOR, 13 X 36 TIRES WIDE FRONT, POWER STEERING, DIESEL,  
YEAR ROUND CAB SN. UNKNOWN  
157 JOHN DEERE 50 TRACTOR 11 X 36 RUBBER, SN. 5016791 NARROW FRONT ROLL-A-MATIC,  
158 JOHN DEERE GP STANDERD TRACTOR, SN. 211310 FRONT ROUND SPOKES, 12 X 28 TIRES  
159 COCKSHUTT 560 TRACTOR DIESEL, WIDE FRONT, 16.9 X 34 TIRES, PERKINS ENGINE?  
160 JOHN DEERE B UNSTYLED TRACTOR W/ FENDERS SN. UNKNOWN  
161 CASE SC TRACTOR 11 X 38 TIRES, SN. 52209013  
162 CASE LA? TRACTOR SN.UNKNOWN

163 CASE S STANDARD TRACTOR D GAS 13 X 26 TIRES SN. 5407986S GOOD TIN, WIDE FRONT, RESTORABLE  
164 CASE D STANDARD TRACTOR, GAS, 13 X 26 TIRES, SN. 5319725D, GOOD TIN, FENDERS, RESTORABLE  
165 OLIVER 70 TRACTOR, GAS, NARROW FRONT, FENDERS, GOOD TIN, SN. 265770B, 12 X 38 TIRES  
166 B.F. AVERY MODEL A TRACTOR, GAS, SN.Y11250083, 10 X 24 TIRES,  
167 JOHN DEERE MODEL A UNSTYLED TRACTOR SN. 439300 RESTORABLE, FACTORY CAST, FACTORY ROUND  
FRONT, 11 X 36 TIRES, FACTORY GRILL,  
168 JOHN DEERE MODEL A UNSTYLED TRACTOR, GAS, FACTORY ROUND SPOKES REAR, FACTORY FENDERS, SN.  
457141, RESTORABLE  
169 OLIVER 66 TRACTOR, GAS, SN. 425615066C FACTORY WIDE FRONT, 34" TIRES, FENDERS, (MISSING  
SIDE PANELS. RESTORABLE  
170 JOHN DEERE MODEL B TRACTOR, FACTORY WIDE FRONT SN. 131124, 10 X 38 TIRES, GOOD TIN, RE-  
STORABLE  
171 CASE LA TRACTOR STANDARD, GAS, SN. 5311846LA, GOOD TIN, FACTORY REAR WHEEL WHEIGHTS 18.4  
X 30 TIRES, FENDERS,  
172 JOHN DEERE MODEL A TRACTOR GAS, SN. 700249 NARROW FRONT ROLL-A-MATIC, 6SPD TRANS, 12.4 X  
38 TIRES, FACTORY FENDERS, GOOD TIN, RESTORABLE,  
173 MINNEAPOLIS MOLINE R TRACTOR, GAS, NARROW SN. 400723, RESTORABLE ( MISSING FENDERS) 12.4  
X 36  
174 ALLIS CHALMERS WC TRACTOR, 13 X 28 TIRES, SN.WC91181, NARROW FRONT, RESTORABLE  
175 TWIN CITIES MODEL JT TRACTOR, GAS, WAUKEESHA ENGINE SN. UNKNOWN, RESTORABLE, NARROW F.,  
FRONT CYLINDER W/ HOMEMADE PUSH BLADE.  
176 CASE SC TRACTOR, FACTORY EAGLE HITCH,WIDE FRONT,WHEEL WEIGHTS,FOOT CLUTCH, SN. SC8030391,  
GOOD TIN,(MISSING FENDERS)  
177 FORD 9N TRACTOR, (MISSING FRONT GRILL)  
178 MCCORMICK W-4 STANDARD TRACTOR, GAS, SN.WBH29482WI, GOOD TIN, RESTORABLE, 13 X 26 TIRES  
179 FARMALL A TRACTOR, GAS, SN. FAA44803, GOOD TIN, RESTORABLE, FENDERS, 9.5-9 X 24 ELEC  
START 6 VOLT  
180 LEYLAND 272 TURBO DIESEL TRACTOR, 3PT, 540 PTO SN.272N-308449-Z 18.4 X 30 TIRES FACTORY  
CAB  
181 FARMALL H TRACTOR, GAS, FACTORY ALL STEEL, HAND CRANK, MISSING FENDERS SN.FBH120838 RE-  
STORABLE, GOOD TIN  
182 MINNEAPOLIS MOLINE U TRACTOR, NARROW FRONT, FENDERS, SN.0194901599,GAS, WITH DELUXE SEAT,  
GOOD TIN, RESTORABLE  
183 OLIVER HART PARR 18-27 ALL STEEL, FACTORY FENDERS, RESTORABLE, SN. 103512, FACTORY SKELO-  
TON REAR STEEL  
184 JOHN DEERE MODEL B TRACTOR, GAS, CAST DASH, SN. UNKNOWN NARROW FRONT, ROLL-A-MATIC, 10 X  
38 TIRES RESTORABLE,  
185 FORDSON TRACTOR FACTORY STEEL (BUILT IN DEEREBORN MI) RESTORABLE  
186 ALLIS CHALMERS B TRACTOR, GAS, RESTORABLE, (MISSING ONE REAR WHEEL) SN. B24963  
187 ALLIS CHALMERS WC TRACTOR, REAR STEEL, FRONT RUBBER, RESTORABLE, SN.WC21141  
188 OLIVER 70 HART PARR TRACTOR, FACTORY FENDERS, FACTORY STEEL ALL AROUND, SN. 213344, GOOD  
TIN, FACTORY SIDE TINS,  
189 FARMALL F-12 TRACTOR, FACTORY WHEELS FRONT, CUTT OFF'S ON BACK, SN. FS93482, RESTORABLE.  
190 MASSEY HARRIS PONY TRACTOR, GAS, FACTORY WHEELS, W/ ONE BOTTOM MOUNTED PLOW, ADJUSTABLE  
WIDE FRONT, SN. N62 12392  
191 JOHN DEERE B TRACTOR, CAST DASH,NARRO FRONT, SN. 197325, (MISSING GRILL AND STEERING  
SHAFT.  
192 MINNEAPOLIS MOLINE R TRACTOR, GAS, NARROW FRONT, SN. 0175002703 12 X 36 TIRES, FENDERS,  
RESTORABLE  
193 MASSEY HARRIS 30 TRACTOR, GAS, NARROW FRONT, FENDERS, SN.MCB168G 136820 38" RUBBER, RE-  
STORABLE  
194 ALLIS CHALMERS WC TRACTOR, FACTORY ROUND SPOKE REARS, FACCTORY DISK FRONTS, FLAT RADIA-  
TOR, SN. WC54137 RESTORABLE  
195 FARMALL M TRACTOR GAS, NARROW FRONT, SN. FBK242270X1 9 SPD TRANS.,LIVE HYDRAULICS, 12.4 X  
38 TIRES, GOOD TIN, RESTORABLE  
196 JOHN DEERE MODEL A UNSTYLED TRACTOR, FACTORY FLATS REAR, CUTT OFF'S FRONTS,SN. 467244,  
RESTORABLE,  
197 ALLIS CHALMES D-17 TRACTOR GAS, WIDE FRONT, SN. D1714916, GOOD TIN, 16.9 X 28 TIRES RE-  
STORABLE  
198 FARMALL 400 TRACTOR, GAS, SCHWARTZ WIDE FRONT, SN. 5341S W/ SAW RIG, REAR WEIGHTS, 14.9 X  
38 TIRES  
199 MASSEY HARRIS 22 TRACTOR 9 X 32 TIRES, NARROW FRONT, FENDERS, SN.UNKNOWN, GOOD TIN, RE-  
STORABLE  
200 JOHN DEERE MODEL A UNSTYLED TRACTOR, FACTORY ROUNDS FRONT, CUTT OFF'S BACK, SN. 419458,  
(MISSING SEAT)

201 FARMALL F-20 TRACTOR, FACTORY ROUNDS FRONT, CUTT OFF'S REAR, SN. UNKNOWN  
202 JOHN DEERE B TRACTOR, NARROW FRONT, (MISSING PARTS, HEAD, GAS TANK,+) SN. 85399  
203 FARMALL F-12 TRI-CYCLE TRACTOR, SN.GS14279 STEP UP TRANSMISSION, (MISSING HOOD)  
204 GRAHAM BRADLEY TRACTOR HMDE WIDE FRONT, SIDE TINS, FENDERS, FACTORY REAR  
WHEELS,SN.UNKNOWN  
205 OLIVER HART PARR 70 TRACTOR, GAS, NARROW FRONT, SN. 211203, SIDE PANELS, FENDERS 13 X 36  
TIRES RESTORABLE  
206 JOHN DEERE B UNSTYLED TRACTOR, ONE FACTORY ROUND SPOKE FRONT AND BACK, ONE FRONT AND BACK  
CUT OFFS SN.B4026, RESTORABLE  
207 FERGUSON 30 TRACTOR SN.TO-136469, FRONT BUMPER, 3PT, FENDERS, RESTORABLE  
208 JOHN DEERE AR STANDARD TRACTOR, SN. 251214, FENDERS RESTORABLE  
209 MCCORMICK DEERING 10-20 TRACTOR, FACTORY ROUNDS FRONT , CUTT OFFS REAR, SN. AC146202,  
GOOD TIN, SIDE PANELS, RESTORABLE  
210 FARMALL F-12 TRACTOR FACTORY CAST FRONTS, STEEL WHEELS REAR, SN. FS103749, RESTORABLE  
211 CASE LA STANDARD TRACTOR, SN. 4808840LA, GOOD TIN  
212 FARMALL H TRACTOR, NARROW FRONT, GAS, W/ JD 45 LOADER (NO BUCKET) SN. FBH230386 12.4 X 38  
TIRES, RESTORABLE  
213 TWIN (MM) CITIES MODEL KE8 TRACTOR SN. 525932 CUT OFF RIMS, RESTORABLE  
214 MCCORMICK DEERING 10-20 TRACTOR SN. KC188488 CUTT OFFS RIMS, GOOD TIN, ( MISSING SIDE  
PANELS)  
215 FARMALL F-20 TRACTOR, FACTORY RUBBER, SN.FA119893 FACTORY SHUTTERS, GOOD TIN, RESTORABLE  
216 OLIVER 60 TRACTOR, SN. 608056, W/ SIDE TINS, FENDERS, RESTORABLE, NARROW FRONT,  
217 JOHN DEERE A UNSTYLED TRACTOR, FACTORY DISH PAN FRONTS CUTT OFFS REAR, SN. 460454, RE-  
STORABLE  
218 FARMALL F-12 TRACTOR, FACTORY ROUND SPOKES FRONT, CUTT OFFS REAR, FACTORY POWER LIFT,  
NARROW FRONT GOOD TIN, RESTORABLE, FS68351  
219 JOHN DEERE B UNSTYLED TRACTOR, FACTORY SHUTTERS, FACTORY ROUNDS FRONTS, CUTT OFFS REAR,  
RESTORABLE, SN.6402  
220 FARMALL F-30 TRACTOR, SN. UNKNOWN, RESTORABLE, NARROW FRONT, FACTORY FRONTS, CUTT OFFS  
REAR, STEP UP TRANSMISSION.  
221 FARMALL F-20 TRACTOR, FACTORY ROUNDS FRONT, CUTT OFFS REARS, STEP UP TRANSMISSION,  
SN.FA34824, RESTORABLE  
222 OLIVER 80 ROW CROP TRACTOR , FACTORY RUBBER, SN.111434 (C 46) GOOD TIN, RESTORABLE  
223 ALLIS CHALMERS UC TRACTOR, FACTORY ROUNDS ONE DISH PAN FRONTS, SN.UC3640 GOOD TIN, RE-  
STORABLE  
224 ALLIS CHALMERS WC TRACTOR STEEL REAR WHEELS BACK, FACTORY FRONTS, SN.WC4081, RESTORABLE  
225 MCCORMICK DEERING 10-20 TRACTOR, CUT OFF WHEELS, SN. KC577799 (MISSING SIDE TINS,  
226 CASE LAI INDUSTRIAL TRACTOR, SN. 4914812LAI, GOOD TIN  
227 CASE VAI TRACTOR, SN.UNKNOWN. RESTORABLE.  
228 MINNEAPOLIS MOLINE U RED FACEED TRACTOR W/ MM EMBLIME ON FRONT GRILL, FACTORY RUBBER,  
FENDERS, SIDE PANELS, SN. 46010, RESTORABLE  
229 OLIVER 60 ROW CROP TRACTOR, SN. 615248, RESTORABLE  
230 ALLIS CHALMERS UC TRACTOR FACTORY ROUNDS REAR, HOMEMADE WIDE FRONT, SN. UC5013, RESTOR-  
ABLE  
231 JOHN DEERE AN TRACTOR,(SINGLE FRONT WHEEL) SN. 496687, RESTORABLE  
232 FARMALL F-12 TRACTOR, (SINGLE FRONT WHEEL) CUT OFF REARS, SN. FS12457 RESTORABLE  
233 JOHN D TRACTOR, FACTORY ROUND FRONTS, SN. UNKNOWN, RESTORABLE  
234 FORDSON (ENGLISH) TRACTOR FACTORY STEEL REAR, CUT OFFS FRONTS, RESTORABLE.  
235 MCCORMICK 10-20 TRACTOR, SN. UNKNOWN, ALL STEEL, (MISSING AIR CLEANER AND HOOD)  
236 MINNEAPLIS MOLINE TWIN CITIES MODEL TY1728 TRACTOR SN. 24484, ALL STEEL 9 MISSING RIGHT  
FENDER AND HOOD)  
237 ALLIS CHALMERS WC TRACTOR, FACTORY ROUND REARS, GOOD TIN, SN. WC7981, RESTORABLE  
238 JOHN DEERE A TRACTOR, SN. 490800, CAST DASH,  
239 OLIVER 60 ROW CROP TRACTOR, (MISSING SIDE TINS) SN.617672, RESTORABLE  
240 JOHN DEERE GM TRACTOR, RESTORABLE, SN. 14011  
241 CASE SC TRACTOR, SN. 5402831SC, (MISSING ASSORTED PART HEAD, GAS TANK, MANIFOLD)  
242 ALLIS CHALMERS RC TRACTOR, HAND CRANK, SN.RC2659, RESTORABLE,  
243 ALLIS CHALMERS WC TRACTOR, HAND CRANK, REAR STEEL, SN. WC121788, RESTORABLE  
244 JOHN DEERE G TRACTOR, STREAM LINE, FACTORY 36" RUBBER, NARROW FRONT, ELEC START, SN.  
24203,RESTORABLE,  
245 JOHN DEERE 420 UTILITY TRACTOR, SN.86110, RESTORABLE  
246 ALLIS CHALMERS WC TRACTOR, REAR STEEL W/ EXT. RIMS, STEEL REAR END, SN. WC135934S, RE-  
STORABLE  
247 MCCORMICK DEERING 10-20 TRACTOR, ALL STEEL, EXT RIMS FRONT, FACTORY FLATS REAR,  
SN.KC201985, SIDE PANELS, RESTORABLE  
248 MCCORMICK DEERING 10-20 TRACTOR, CUT OFFS RIMS, (MISSING ONE SIDE PANEL), SN. KC152870,  
RESTORABLE

249 JOHN DEERE A STYLED TRACTOR, NARROW FRONT ROLL-A-MATIC SPLIT FRONT PEDESTAL, SN. 658168, RESTORABLE

250 JOHN DEERE BO TRACTOR (ORCHARD) SN. 337222, RESTORABLE

251 JOHN DEERE 60 TRACTOR, GAS, NARROW FRONT, ROLL-A-MATIC ,POWER STEERING, SN.6045914, RESTORABLE,

252 JOHN DEERE H TRACTOR, GAS, NARROW FRONT, HAND START, CUT FLATS FRONT, FACTORY RUBBER REARS, SN. H-12117 RESTORABLE,

253 CASE RC TRACTOR, SINGLE FRONT WHEEL, STEEL WHEELS REAR , FACTORY FENDERS SN. RC310955, RESTORABLE,

254 JOHN DEERE R TRACTOR, GOOD TIN, SN. R9295, RESTORABLE

255 JOHN DEERE A UNSTYLED TRACTOR, FACTORY ALL STEEL, FACTORY TIP TOES SN. 474638, RESTORABLE

256 JOHN DEERE UNSTYLED B TRACTOR, FACTORY DISH PAN FRONTS , ONE FACTORY ROUND SPOKE REAR, SN. B49749, RESTORABLE, ONE REAR CUT OFF.

257 MCCORMICK W-30 TRACTOR CUT OFF WHEELS, SN. WP8957, RESTORABLE.

258 MINNEAPOLIS MOLINE RE TRACTOR, SN. RE79803 RESTORABLE.

259 JOHN DEERE A UNSTYLED TRACTOR, CUT OFF WHEELS, SN. 413921, RESTORABLE.

260 MCCORMICK DEERING SUPER W-6 TRACTOR, LIVE HYDRAULIC, GOOD TIN, SN. 2184J, RESTORABLE

261 JOHN DEERE MODEL D TRACTOR, FACTORY ROUND SPOKES WHEELS, SN. 122702

262 JOHN DEERE D TRACTOR, FACTORY REAR STEEL W/REAR EXTENSIONS, SHUTTERS, SN. 142317, PTO, RESTORABLE

263 JOHN DEERE AR TRACTOR, FACTORY CAST REARS, FACTORY DISH PAN FRONTS, SN. 26345, RESTORABLE

264 JOHN DEERE UNSTYLED B TRACTOR, FACTORY REAR ROUND SPOKES, FACTORY DISH PAN FRONTS, SN. B40977, (MISSING CLUTCH) RESTORABLE

265 JOHN DEERE BR TRACTOR, ELEC. START, FACTORY CAST REAR, DISH PAN FRONTS, SN. 336981 RESTORABLE

266 FORDSON (ENGLISH) TRACTOR ALL STEEL, SN. UNKNOWN, RESTORABLE.

267 FORDSON (ENGLISH) TRACTOR ALL STEEL, SN. UNKNOWN FRONT MAG, RESTORABLE.

268 FORDSON (ENGLISH) TRACTOR ALL STEEL, SN. UNKNOWN RESTORABLE, (MISSING COIL BOX)

269 JOHN DEERE GP TRACTOR, ON RUBBER, FENDERS, SN. 202127, RESTORABLE

270 ALLIS CHALMERS WD-45 DIESEL TRACTOR, BUDA DIESEL ENGINE, WIDE FRONT, SN. WD218462D, RESTORABLE,

271 ALLIS CHALMERS WC TRACTOR, NARROW FRONT, SN. WC138068, RESTORABLE.

272 MASSEY HARRIS 81 TRACTOR, NARROW FRONT, SN. 406187 RESTORABLE, ( MISSING ONE FRONT WHEEL AND SIDE PANELS)

273 FORDSON (CORK IRELAND) TRACTOR, FACTORY ROUND SPOKES RESTORABLE

274 FORDSON (ENGLISH) TRACTOR, ALL STEEL, SIDE MAG, SN. UNKNOWN, RESTORABLE

275 CASE R TRACTOR, FACTORY SINGLE FRONT, CUT OFFS REAR, SN. RC302843, RESTORABLE

276 JOHN DEERE 60 TRACTOR, NARROW FRONT, ROLL-A-MATIC, SOLID PEDASTAL, SN. 6006983

277 MINNEAPOLISE MOLINE U TRACTOR, RED FACE, SN. 545294, RESTORABLE

278 MCCORMICK 10-20 TRACTOR, FACTORY ALL STEEL, SN. UNKNOWN, RESTORABLE

279 JOHN DEERE 50 TRACTOR, NARROW FRONT, ROLL-A-MATIC, SN. 5011217, RESTORABLE

280 JOHN DEERE D TRACTOR, CUT OFFS RIMS, SN. 92010, RESTORABLE

281 MINNEAPOLIS MOLINE ZTU TRACTOR, RED FACE SN.ZTU577675U, RESTORABLE

282 ALLIS CHALMERS BI TRACTOR, INDUSTRIAL, GOOD TIN, WIDE FRONT, SN.B1173, RESTORABLE

283 OLIVER 77 ROW CROP TRACTOR, NARROW FRONT, SN. B328387C, RESTORABLE,(MISSING SIDE PANELS)

284 DEUTZ D50206 TRACTOR, DIESEL, FENDERS, 3PT, PTO,LIVE POWER, 1 REMOTES, SN. 7553 3640

285 CENTAUR TRACTOR, WIDE FRONT, FACTORY WHEELS, SN. UNKNOWN, RESTORABLE

286 INTERNATIONAL 560 DIESEL TRACTOR, SCHWARTZ WIDE FRONT FACTORY REAR SPIN OUT WHEELS, SN. UNKNOWN, RESTERABLE

287 OLIVER 77 STANDARD TRACTOR FRAME, WIDE FRONT, FENDERS, (MISSING MOTOR) SN. 269694

288 FARMALL F-12 TRACTOR, FACTORY FRONTS, REAR CUT OFFS, SN. UNKNOWN, RESTORABLE

289 OLIVER HART PARR TRACTOR ADJUSTABLE WIDE FRONT SN. UNKNOWN

290 FORDSON POWER MAJOR DIESEL TRACTOR, LIVE POWER, SN. UNKNOWN, RESTORABLE.

291 CASE DC 4 TRACTOR, GAS, HEART WIDE FRONT, FACTORY RUBBER. RESTORABLE, SN. UNKNOWN

292 OLIVER 770 TRACTOR, NARROW FRONT, FLAT TOP FENDERS, SN. 175392035, GAS, DUAL HYDRAULICS, RESTORABLE

293 FARMALL F-14 TRACTOR REAR CUT OFFS, FACTORY FRONTS, STEP UP TRANSMISSION, SN. FS127900, RESTORABLE (CRACKED BLOCK)

294 ALLIS CHALMERS WD TRACTOR FACTORY SINGLE FRONT, SN. UNKNOWN, NARROW FRONT, W/ AC 2RW MOUNTED CORN PICKER, RESTORABLE

295 MCCORMICK DEERING 10-20 TRACTOR, CUT OFF WHEELS, SN. KC211607, FENDERS, RESTORABLE

296 FARMALL H TRACTOR, NARROW FRONT, RESTORABLE, W/ IH LOADER AND MANUARE BUCKET. SN. FBH319018

297 FARMALL F-30 TRACTOR, SN. UNKNOWN, FACTORY SPOKES REAR AND FRONTS, RESTORABLE,

298 CASE CC TRACTOR, FACTORY WHEELS, SN. C311976 RESTORABLE

299 FARMALL REGULAR TRACTOR, CUT OFF WHEELS, SN. T21522, RESTORABLE



300 MINNEAPOLIS MOLINE TWIN CITIES JT TRACTOR, SN.551296 CUT OFF FRONT WHEELS, FACTORY WHEELS REARS

301 JOHN DEERE A TRACTOR, NARROW FRONT, CUT OFF WHEELS, SN.496343, RESTORABLE

302 MCCORMICK 22-36 TRACTOR, CUT OFF WHEELS, SN. UNKNOWN, RESTORABLE

303 ALLIS CHALMERS D-17 DIESEL TRACTOR, BUDA DIESEL ENGINE , WIDE FRONT, POWER STEERING, SN.D1717710D, RESTORABLE

304 ALLIS CHALMERS K CRAWLER TRACTOR W/ DOZER BLADE, GAS, SN. UNKNOWN, RESTORABLE

305 CASE DC TRACTOR, NARROW FRONT, SN. 527277DC RESTORABLE

306 JOHN DEERE A TRACTOR, ELEC START, NARROW FRONT, FACTORY WHEELS, SN.582576, CAST DASH, RESTORABLE

307 ALLIS CHALMERS D-17 DIESEL TRACTOR, BUDA ENGINE, WIDE FRONT SN. D1724585D, RESTORABLE

308 JOHN DEERE A TRACTOR, HAND START, NARROW FRONT, FACTORY WHEELS, SN. 537991, RESTORABLE

309 FARMALL F-20 TRACTOR W/ HYDRAULICS, SN. FA33390 RESTORABLE

310 FARMALL SUPER H TRACTOR, FACTORY FENDERS, WHEELS, SN. 17024 J, RESTORABLE, FACTORY WHEEL WEIGHTS

311 MASSEY HARRIS 33 TRACTOR, FACTORY WIDE FRONT, SN. 11886 FACTORY FENDERS, RESTORABLE

312 CASE DC TRACTOR, FACTORY REAR WHEELS, CUT OFFS FRONT, NARROW FRONT, SN.512905DC, RESTORABLE,

313 ALLIS CHALMERS WC TRACTOR (FOR PARTS) SN.WC43122

314 MCCORMICK DEERING 22-36 TRACTOR, ALL STEEL, SN. TG140836M, RESTORABLE

315 SAMSON MODEL M15844 TRACTOR FACTORY STEEL WHEELS, FENDERS,(FOR PARTS)

316 FARMALL F-12 OR 14 TRACTOR (FOR PARTS) SN. UNKNOWN (TAG MISSING)

317 JOHN DEERE A TRACTOR (MISSING ENGINE) ROUND AXLE WIDE FRONT, SN. 689181 (FOR PARTS)

318 FARMALL 560 DIESEL TRACTOR, IH WIDE FRONT, FAST HITCH ,SN.402581S-Y, RESTORABLE

319 MASSEY HARRIS 101 JR. TRACTOR, NARROW FRONT, (MISSING SIDE PANELS), SN. UNKNOWN, RESTORABLE

320 JOHN DEERE B TRACTOR, NARROW FRONT, ROLL-A-MATIC, SN.B288711, RESTORABLE

321 FARMALL MD DIESEL TRACTOR, NARROW FRONT SN. FDBK135142 RESTORABLE

322 JOHN DEERE B STYLED TRACTOR, NARROW FRONT, (PARTS TRACTOR), SN. B220230

323 JOHN DEERE A STYLED TRACTOR, NARROW FRONT, SN. UNKNOWN, RESTORABLE

324 MASSEY HARRIS 33 TRACTOR, (NO FRONT END) SN. UNKNOWN

325 ALLIS CHALMERS WC TRACTOR, W/AC 2RW MOUNTED CORN PICKER, SN. WC82423, RESTORABLE

326 510 S LONG 3 CYL DIESEL 3PT WITH DOZER BLADE. SERIAL NUMBER UNKNOWN. RESTORABLE. REAR REMOTE

327 MCCORMICK-DEERING10-20 ALL STEEL TRACTOR. MISSING SIDE PANELS. MISSING SEAT. SERIAL NUMBER: KC91881

328 JOHN DEERE "H" PARTS TRACTOR

329 ALLIS CHALMERS MODEL C GAS ENGINE POWER UNIT WITH 540 PTO ON CART. VERY RESTORABLE.

330 ALLIS CHALMERS WC. NARROW FRONT. (MISSING 1 FRONT WHEEL) SERIAL NUMBER: 8071. RESTORABLE.

331 JOHN DEERE A. 6 SPEEDS IN THE MAIN BOX HAS NF ROLL-A-MATIC. RESTORABLE. SERIAL NUMBER 658168

332 JOHN DEERE A. PARTS TRACTOR. CAST DASH SERIAL NUMBER 50058

333 JOHN DEERE A. PARTS TRACTOR. NARROW FRONT. SERIAL NUMBER 633871

334 JOHN DEERE B. STREAMOLINED WITH TWO ROW MOUNTED CULTIVATORS. SERIAL NUMBER UNKNOWN

335 MASSEY HARRIS 44 STANDARD. W/4 CYLINDER GAS ENGINE. SERIAL NUMBER UNKNOWN.

336 OLIVER 80 ROW CROP. SERIAL NUMBER: UNKNOWN

337 CASE 500 DIESEL STANDARD. W/REAR WHEEL WINGS. 23.1-26 TIRES. W/POWER STEERING. STORED IN SHED. GOOD TIN. TRACTOR CLEAN. SERIAL NUMBER: 803004

338 OLIVER HART-PAR 70 ROW CROP RESTORABLE. SERIAL NUMBER: UNKNOWN.

339 CASE RC W/FENDERS. SERIAL NUMBER: 32576

340 ALLIS CHALMERS WC. SERIAL NUMBER: 51114

341 FARMALL F20. RESTORABLE. SERIAL NUMBER: FA33692

342 MINNEAPOLIS MOLINE UB W/FACTORY WIDE FRONT. GOOD TIN. REAR REMOTE. 540 PTO. VERY RESTORABLE. SERIAL NUMBER: 05900029

343 JOHN DEERE A STREAMOLINE NARROW FRONT. SERIAL NUMBER 585720. RESTORABLE.

344 BF AVERY MODEL A. MODIFIED WIDE FRONT. RESTORABLE SERIAL NUMBER: UNKNOWN.

345 ALLIS CHALMERS WC RESTORABLE. SERIAL NUMBER: 54837

346 ALLIS CHALMERS RC. NARROW FRONT. MISSING ONE TIRE IN FRONT. RESTORABLE. SERIAL NUMBER: 199

347 JOHN DEERE D \*MISSING STARTER. SERIAL NUMBER UNKNOWN

348 MCCORMICK DEERING 1020 W/ ENGINE SIDE PANELS RESTORABLE. SERIAL NUMBER: 47679

349 ALLIS CHALMERS B W/ FRONT PUSHER BLADE. RESTORABLE. SERIAL NUMBER: 36525

350 JOHN DEERE MT W/NARROW FRONT. RESTORABLE. SERIAL NUMBER: MT30851

351 MCCORMICK DEERING 1020. FACTORY ROUND SPOKE FRONT WHEELS. RESTORABLE. SERIAL NUMBER UNKNOWN.

352 MCCORMICK DEERING 1020. MISSING SIDE PANELS. SERIAL NUMBER: 867799  
353 CASE LAI WIDE FRONT. RESTORABLE. SERIAL NUMBER: 4914812  
354 DC CASE W/NARROW FRONT. \*MISSING ONE FRONT TIRE. RESTORABLE. SERIAL NUMBER: UNKNOWN  
355 CASE SC WITH FRONT MOUNT 2 ROW CULTIVATOR. RESTORABLE. SERIAL NUMBER: 4706379  
356 ALLIS CHALMERS WC. FACTORY REAR ROUND SPOKES. RESTORABLE. SERIAL NUMBER: 2144  
357 JOHN DEERE B W/NARROW FRONT. FACTORY FLATS ON REAR. RESTORABLE. SERIAL NUMBER: 74676  
358 MASSEY-HARRIS W/NARROW FRONT, 2 ROW CULTIVATOR, HYDRAULIC LIFT. RESTORABLE. SERIAL NUMBER: UNKNOWN  
359 CC CASE FACTORY ROUND SPOKES IN FRONT. RESTORABLE SERIAL NUMBER: 462090  
360 MCCORMICK DEERING 1020 ALL STEEL WHEELS AND SIDE CURTAINS. RESTORABLE. SERIAL NUMBER: 16985  
361 JOHN DEERE B UNSTYLED. FACTORY ROUND SPOKES IN FRONT. RESTORABLE. SERIAL NUMBER: 21706  
362 JOHN DEERE B. STYLED FRONT END. RESTORABLE. SERIAL NUMBER: 14091  
363 FARMALL F20 TRACTOR RESTORABLE. SERIAL NUMBER: 16076  
364 JOHN DEERE B W/FACTORY WIDE FRONT. STYLED. RESTORABLE. SERIAL NUMBER: B288792  
365 JOHN DEERE MODEL A TRACTOR. STYLED. W/SLANT DASH RESTORABLE. SERIAL NUMBER: 57927  
366 CASE VAC 14 TRACTOR. HIGH RUBBER. MISSING HOOD AND SIDE PANELS. HAS FENDERS, EAGLE HITCH SERIAL NUMBER: 6011076  
367 CASE L ALL STEEL TRACTOR RESTORABLE. SERIAL NUMBER: 363206  
368 FARMALL F20 TRACTOR. FRONT AND REAR FACTORY ROUND SPOKES, OVERDRIVE STEP UP TRANSMISSION. RESTORABLE. SERIAL NUMBER: FA51667  
369 JOHN DEERE A STYLED. NARROW FRONT. ROLL-A-MATIC. RESTORABLE SERIAL NUMBER: 613260  
370 FARMALL F20 TRACTOR W/FACTORY ROUND REAR SPOKES. RESTORABLE. SERIAL NUMBER: 40100  
371 FARMALL F12 TRACTOR. REAR STEEL. RESTORABLE. SERIAL NUMBER: F680222  
372 FARMALL F12 TRACTOR. ROUND SPOKE FRONT, REAR STEEL. RESTORABLE. SERIAL NUMBER: F879185  
373 MCCORMICK DEERING 1020 TRACTOR W/FRONT AND REAR STEEL MISSING HOOD AND SIDE TIN. ALL STEEL. RESTORABLE. SERIAL NUMBER: UNKNOWN  
374 JOHN DEERE D PARTS TRACTOR. SERIAL NUMBER: UNKNOWN  
375 FARMALL REGULAR TRACTOR W/HYDRAULIC PUMP RESTORABLE. SERIAL NUMBER: 90850  
376 ALLIS CHALMERS WC W/REAR STEEL WHEELS. RESTORABLE. SERIAL NUMBER: 19957  
377 CASE CC TRACTOR W/2 ROW CULTIVATOR RESTORABLE. SERIAL NUMBER: 032931  
378 JOHN DEERE D TRACTOR. UNSTYLED. PARTS TRACTOR. SERIAL NUMBER: UNKNOWN  
379 MINNEAPOLIS MOLINE UTS RED NOSE TRACTOR W/ WIDE FRONT. RESTORABLE. SERIAL NUMBER: 310142  
380 JOHN DEERE D. STYLED. PARTS TRACTOR. SERIAL NUMBER: UNKNOWN  
381 OLIVER 77(?) TRACTOR W/LOADER PARTS TRACTOR. SERIAL NUMBER: UNKNOWN  
382 JOHN DEERE B TRACTOR W/NARROW FRONT. RESTORABLE. SERIAL NUMBER: UNKNOWN  
383 FARMALL REGULAR. PARTS TRACTOR. SERIAL NUMBER: UNKNOWN  
384 ALLIS CHALMERS WC PARTS TRACTOR. SERIAL NUMBER: 0625  
385 JOHN DEERE MODEL A. PARTS TRACTOR. SERIAL NUMBER: 57222  
386 CASE VAC. PARTS TRACTOR. SERIAL NUMBER: 5554106  
387 JOHN DEERE B PARTS TRACTOR. SERIAL NUMBER: UNKNOWN  
388 OLIVER 70 PARTS TRACTOR. SERIAL NUMBER: UNKNOWN  
389 JOHN DEERE B W/STREAMOLINED FRONT. PARTS TRACTOR. SERIAL NUMBER: 189642  
390 OLIVER 70 PARTS TRACTOR. SERIAL NUMBER: UNKNOWN  
391 JOHN DEERE B W/STREAMOLINED FRONT PARTS TRACTOR. SERIAL NUMBER: 260954  
392 MCCORMICK DEERING 1020 TRACTOR W/SIDE CURTAINS AND FENDERS. ALL STEEL. RESTORABLE. SERIAL NUMBER: KD60946  
393 MINNEAPOLIS MOLINE VA PARTS TRACTOR. SERIAL NUMBER: 0069101612  
394 OLIVER 66 ROW CROP TRACTOR. RESTORABLE. SERIAL NUMBER: 0229  
395 COCKSHUTT 40 TRACTOR W/WIDE FRONT. RESTORABLE. SERIAL NUMBER: UNKNOWN  
396 JOHN DEERE A PARTS TRACTOR. SERIAL NUMBER: 558938  
397 FARMALL H PARTS TRACTOR SERIAL NUMBER: UNKNOWN.  
398 JOHN DEERE G PARTS TRACTOR. NO ENGINE\* SERIAL NUMBER: 27166  
399 ALLIS CHALMERS WC PARTS TRACTOR. SERIAL NUMBER: 82714  
400 MCCORMICK DEERING 1020 PARTS TRACTOR. SERIAL NUMBER: KA10430  
401 FARMALL H 1939(?) PARTS TRACTOR SERIAL NUMBER: 6533  
402 MINNEAPOLIS MOLINE UB PARTS TRACTOR. NO FRONT END. SERIAL NUMBER: UNKNOWN  
403 CATAPILLAR CRAWLER TRACTOR WITH MOTOR. PARTS TRACTOR. SERIAL NUMBER: UNKNOWN.  
404 LANZ BULL DOG. SERIAL NUMBER: 711367 TYPE: D5006 DIESEL, GOOD TIN. WILL RUN. 15-30 RUBBER. 3 BROKEN GUAGES. HAS FRONT WEIGHTS. HAS ORIGINAL OPERATOR'S MANUAL. \*STORED IN SHED.  
405 HART-PARR 28-50 TRACTOR. STEEL ALL THE WAY AROUND. SERIAL NUMBER: UNKNOWN. \*STORED IN SHED. (OLDER RESTORATION)-RUNS-  
406 THE MINNEAPOLIS 17-30 ALL STEEL TRACTOR SERIAL NUMBER: 4915 \*STORED IN SHED. (OLDER RESTORATION)-RUNS-  
407 JOHN DEERE GP TRACTOR. OLDER RESTORATION. SHOULD RUN. SERIAL NUMBER: 222446 ON RUBBER. METAL IS STRAIGHT. \*STORED IN SHED. FACTORY ROUND SPOKES IN FRONT.

408 TWIN CITY JT ALL STEEL TRACTOR. METAL STRAIGHT. SERIAL NUMBER: 551828 \*STORED IN SHED.

409 JOHN DEERE D STANDARD ALL STEEL TRACTOR. SHOULD RUN. STORED IN SHED. SERIAL NUMBER: 225779

410 ALLIS CHALMERS WC TRACTOR. W/FENDERS. STRAIGHT METAL. STORED IN SHED. SHOULD RUN. SERIAL NUMBER: 66480

411 ALLIS CHALMERS WC UNSTYLED. METAL STRAIGHT. REAR WHEEL WEIGHTS, WITH FENDERS. STORED IN SHED. SHOULD RUN. SERIAL NUMBER: 52495

412 MASSEY HARRIS 20 TRACTOR. METAL STRAIGHT. W/FENDERS. NARROW FRONT. STORED IN SHED. SHOULD RUN. SERIAL NUMBER: UNKNOWN

413 ALLIS CHALMERS WC TRACTOR. METAL STRAIGHT. W/FENDERS. STORED IN SHED. SHOULD RUN. SERIAL NUMBER: 22605

414 ALLIS CHALMERS RC. METAL STRAIGHT. W/FENDERS. STORED IN SHED. SHOULD RUN. SERIAL NUMBER: RC2351

415 MASSEY HARRIS 101 SENIOR TRACTOR W/NF. RESTORABLE. SERIAL NUMBER 2674419

416 FERGESON PARTS TRACTOR. SERIAL NUMBER UNKNOWN.

417 MINNEAPOLIS MOLINE R TIN IS STRAIGHT. HAS SIDE PANELS. RESTORABLE. SERIAL NUMBER: UNKNOWN.

418 ALLIS CHALMERS WC UNSTYLED TRACTOR. W/FENDERS. REAR STEEL. RESTORABLE. SERIAL NUMBER: 48795

419 CASE SC TRACTOR W/NF, STRAIGHT METAL. RESTORABLE. SERIAL NUMBER 526792

420 FORD 9N TRACTOR. METAL STRAIGHT. RESTORABLE. SERIAL NUMBER: UNKNOWN.

421 ALLIS CHALMERS WC TRACTOR. STRAIGHT METAL. UNSTYLED. MISSING MANIFOLD. REAR FACTORY ROUND SPOKES. SERIAL NUMBER: WC3612 RESTORABLE.

422 MINNEAPOLIS MOLINE TWIN CITY TRACTOR. METAL IS STRAIGHT. STANDARD. RESTORABLE. SERIAL NUMBER: KTA804056

423 JOHN DEERE D TRACTOR. STYLED. STRAIGHT METAL. W/FENDERS. RESTORABLE. SERIAL NUMBER: 172889

424 MINNEAPOLIS MOLINE Z STANDARD TRACTOR. STRAIGHT METAL RESTORABLE. SERIAL NUMBER: Z00700642

425 FORDSON MAJOR DIESEL TRACTOR. WIDE FRONT. STRAIGHT TIN W/ FENDERS. RESTORABLE. SERIAL NUMBER: UNKNOWN.

426 OLIVER 60 ROWCROP TRACTOR. STRAIGHT TIN W/ENGINE SIDE PANELS. NARROW FRONT. RESTORABLE. SERIAL NUMBER: UNKNOWN.

427 FORD TRACTOR ENGINE WITH TRANSMISSION ON TWO WHEELED TRAILER W/GENERATOR.

428 OLIVER 880 DIESEL TRACTOR. STRAIGHT METAL. WIDE FRONT. MISSING FRONT WHEELS. RESTORABLE. SERIAL NUMBER: NB1402

429 ALLIS CHALMERS D14 GAS TRACTOR. W/INDUSTRIAL FULL HYDRAULIC LOADER. WIDE FRONT. W/CAB FRAME. HOOD IS MISSING. TRACTOR IS RESTORABLE. SERIAL NUMBER: UNKNOWN

430 CASE 411 TRACTOR W/NARROW FRONT. MISSING A SEAT. METAL IS STRAIGHT. 3PT, EAGLE HITCH. RESTORABLE. SERIAL NUMBER: 8080218

431 MINNEAPOLIS MOLINE JET STAR "PARTS" TRACTOR SERIAL NUMBER: UNKNOWN

432 WD ALLIS PARTS TRACTOR. SERIAL NUMBER: UNKNOWN

433 MINNEAPOLIS MOLINE UB W/NARROW FRONT. PARTS TRACTOR. SERIAL NUMBER: UNKNOWN

434 ALLIS CHALMERS WC SN. 191847 W/ FLAT SPOKE WHEELS, ALL STEEL,

435 ALLIS CHALMERS WF TRACTOR, SN.153 W/ REAR STEEL, FRONT RUBBER,

436 ALLIS CHALMERS U TRACTOR, REAR AND FRONT FACTORY SPOKES WHEELS, SN. U25-12, NARROW FRONT,

437 OLIVER 60 ROW CROP TRACTOR, (OLDER RESTORATION), SN. UNKNOWN, (BENT STEERING WHEEL)

438 FARMALL F-12 TRACTOR, SN.102788, GOOD TIN, (BENT STEERING WHEEL)

439 FARMALL H TRACTOR, NARROW FRONT, OLDER RESTORATION, SN. FBH202075X1, (BENT STEERING WHEEL)

440 ALLIS CHALMERS WD TRACTOR, WIDE FRONT, OLDER RESTORATION, GOOD RUBBER, SPIN OUT RIMS, SN. UNKNOWN,

441 FARMALL A TRACTOR, (MISSING LEFT REAR WHEEL), ADJUSTABLE WIDE FRONT, SN. UNKNOWN,

442 FORD MODEL A CAR, 2 DOOR, OLDER RESTORATION, CLOTH SEATS, (DAMAGE TO ROOF, RIGHT REAR WINDOW BROKE), SPARE TIRE,

443 COCKSHUTT 60 STANDARD TRACTOR, WIDE FRONT, HAND START, ALL STEEL, ENGINE SIDE PANELS, (STEERING WHEEL BROKE), SN. UNKNOWN,

444 MCCORMICK DEERING 10-20 TRACTOR, WELDED WHEELS ON RUBBER, SN. UNKNOWN, (LEFT FENDER AND HOOD, DAMAGE)

445 JOHN DEERE D TRACTOR, ALL STEEL, OLDER RESTORATION, (RIGHT FENDER DAMAGE, BROKEN STEERING WHEEL) SN. UNKNOWN

446 JOHN DEERE M TRACTOR, RESTORABLE, SN. UNKNOWN

447 JOHN DEERE LA TRACTOR, W/ 1 ROW HAND LIFT CULTIVATOR, RETORABLE, SN.UNKNOWN

448 JOHN DEERE B TRACTOR, NARROW FRONT, ROLL-A-MATIC, FENDER 6 SPD. MAIN BOX TRANSMISSION, FENDERS, (BENT STEERING WHEELS, AND STEERING SHAFT, RIGHT FENDER DAMAGE,) SN. 296159, GOOD TIN, RESTORABLE

449 JOHN DEERE AR TRACTOR UNSTYLED TRACTOR, ALL STEEL, W/ REAR WHEELS BANDS, FACTORY ROUND FRONTS, FACTORY FLATS REAR, LUGS, SN. 264912

450 FARMALL F-20 TRACTOR, FACTORY RUBBER, GOOD TIN, RESTORABLE, SN. 147918

451 CASE C TRACTOR, SN. C311261, OLDER RESTORATION, RUBBER TIRES, GOOD TIN

452 FARMALL REGULAR TRACTOR, REAR STEEL, FRONT RUBBER, OLDER RESTORATION, (BENT STEERING SHAFT SN. UNKNOWN

453 JOHN DEERE GENERAL PURPOSE UNSTYLED TRACTOR, ALL STEEL, FACTORY ROUND FRONTS, FACTORY FLATS REAR, OLDER RESTORATION, ( BENT STEERING WHEEL AND BENT STEERING SHAFT) W/ LUGS

454 HUBER U TRACTOR, SN.276414 , ALL STEEL, FENDERS, (DAMAGE TO HOOD) RESTORABLE LOOKS COMPLETE

455 MCCORMICK DEERING W-30 TRACTOR ALL STEEL, SN. WB13652, FENDERS, ( HOOD DAMAGE) RESTORABLE,

456 FORD 9N TRACTOR, (HOOD DAMAGE) RESTORABLE, SN. 9N240703

457 ALLIS CHALMERS G TRACTOR, W 4FT ALLIS CHALMERS BELLY MOWER, (BENT STEERING WHEEL, BENT STEERING SHAFT), FENDERS, OLDER RESTORATION, SN. UNKNOWN

458 JOHN DEERE GENERAL PURPOSE TRACTOR, ALL STEEL, ( MISSING FRONT WHEELS), (HOOD DAMAGE) RESTORABLE, SN.210014

459 MASSEY HARRIS PONY TRACTOR, W/ WHEEL WEIGHTS, FENDERS, (LEFT FENDER, STEER WHEEL DAMAGE) RESTORABLE, SN. PGS3844

460 JOHN DEERE D TRACTOR, ALL STEEL, FENDERS, SN.113011, PTO, GOOD TIN, RESTORABLE

461 JOHN DEERE AR STYLED TRACTOR, LATE MODEL, SN. 276895, OLDER RESTORATION, (RIGHT FENDER DAMAGE)

462 JOHN DEERE G TRACTOR, FACTORY WIDE FRONT, SN. 27677, GOOD TIN, (STEERING WHEEL AND STEERING SHAFT BENT, HOOD DAMAGE), RESTORABLE

463 JOHN DEERE D TRACTOR, LATE MODEL, (MISSING GRILL, RADIATOR, HEAD) SN. UNKNOWN FOR PARTS

464 JOHN DEERE A STYLED TRACTOR, FACTORY WIDE FRONT, (STEERING WHEEL AND STEERING SHAFT BENT), HAND START, SN. 645319, RESTORABLE, GOOD TIN,

465 JOHN DEERE A UNSTYLED TRACTOR, W/SHUTTER, NARROW FRONT SN.422324, RESTORABLE, (STEERING WHEEL AND STEERING SHAFT BENT), GOOD TIN, ON RUBBER, CUT OFF RIMS,

466 JOHN DEERE B STYLED TRACTOR, FACTORY RUBBER, SN. 111540, RESTORABLE,

467 JOHN DEERE A TRACTOR, RESTORABLE, SN. 489317

468 JOHN DEERE BR UNSTYLED, WELDED RUBBER, SN. 325556, RESTORABLE,

469 JOHN DEERE H TRACTOR, NARROW FRONT, W/ JOHN DEERE 2 ROW CULTIVATOR HAND LIFT, RESTORABLE, (STEERING WHEEL AND STEERING SHAFT BENT), SN. UNKNOWN

470 JOHN DEERE B UNSTYLED TRACTOR, SN. 46491, RESTORABLE, CUT OFF RIMS, GOOD TIN,

471 MCCORMICK DEERING W30 TRACTOR, FACTORY ROUND SPOKES, SN.WB9603P, RUBBER TIRED, GOOD TIN, RESTORABLE, (BENT STEERING WHEEL)

472 ROCK ISLAND PLOW CO. 15-25 TRACTOR, MODEL G2-90091 ALL STEEL (BROKEN STEERING WHEEL) RESTORABLE, GOOD TIN,

473 CASE L TRACTOR, SN. 317805, RUBBER TIRED, CUT OFF RIMS,

474 HUBER LO ROW CROP TRACTOR, FACTORY REAR ROUND SPOKES, RUBBER TIRED, RESTORABLE, SN. 11663

475 CASE CROSS MOTOR TRACTOR, FACTORY ALL STEEL, GOOD TIN, RESTORABLE.

476 JOHN DEERE H TRACTOR, RESTORABLE, W/ CHAIN DRIVE SNOW BLOWER, TRACTOR CHAINS, SN. UNKNOWN.

477 MINNEAPOLIS MOLINE Z TRACTOR, FACTORY SINGLE FRONT WHEEL, FENDERS, GOOD TIN, RESTORABLE, W, MOLINE 2ROW CULTIVATOR, SN. 5737281, ENGINE SIDE PANELS,

478 ALLIS CHALMERS U STANDARD TRACTOR, SN. UNKNOWN GOOD TIN, RESTORABLE, ( BENT STEERING WHEEL)



Scroll  
down for  
more  
photos











